



## **Remover Status Invalid en Adobe Acrobat o Reader**

[support@dtellcpr.com](mailto:support@dtellcpr.com)

Desarrollado por:	DTE, LLC
Revisado en:	2 de Jul. de 2025
Versión:	01.2025

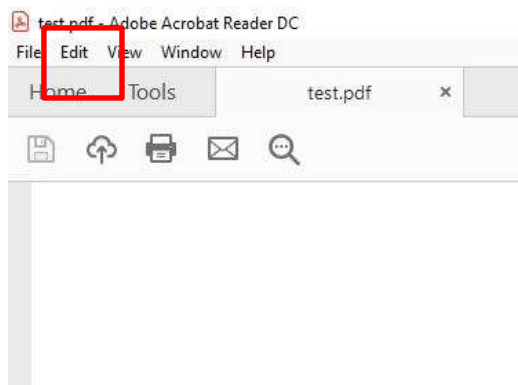
Para remover el Stauts Invalid como muestra la siguiente imagen, siga las instrucciones de este manual.

*To remove the Stauts Invalid as shown in the following image, follow the instructions in this manual.*



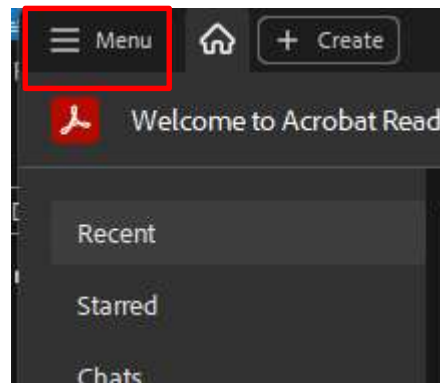
## Paso 1

Seleccione Edit o Menu



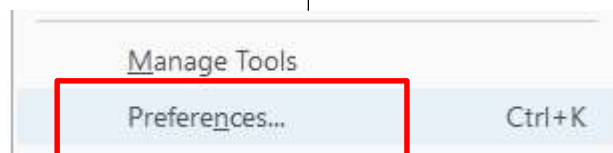
## Step 1

*Press Edit or Menu*



## Paso 2

Seleccione Preferences...



## Step 2

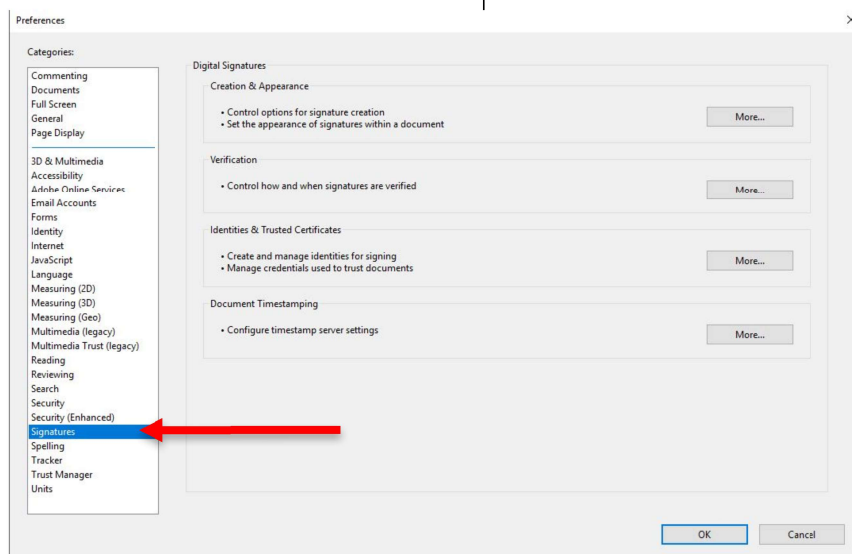
*Select Preferences...*

### Paso 3

Seleccione Signatures dentro de la columna izquierda.

### Step 3

Select Signatures from the left column.

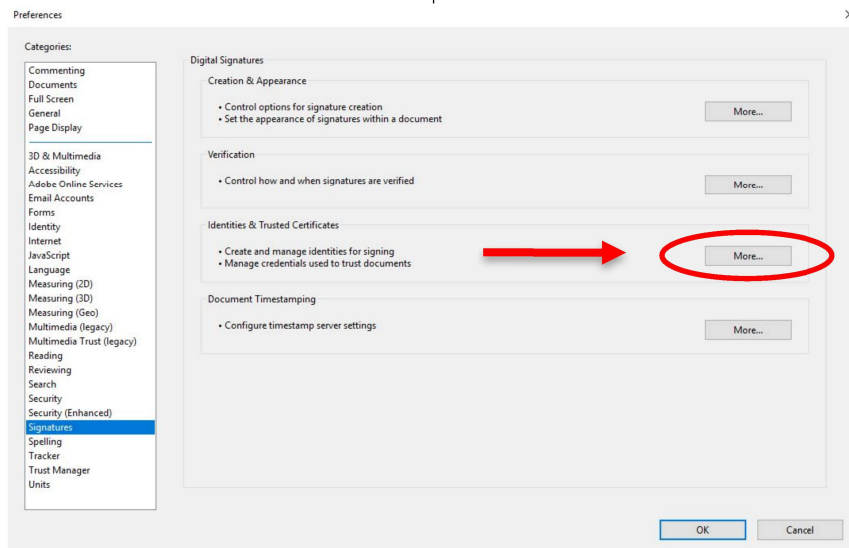


### Paso 4

Presione el boton de More... dentro de la seccion de Identities & Trusted Certificates.

### Step 4

Press the More... button from the Identities & Trusted Certificates.

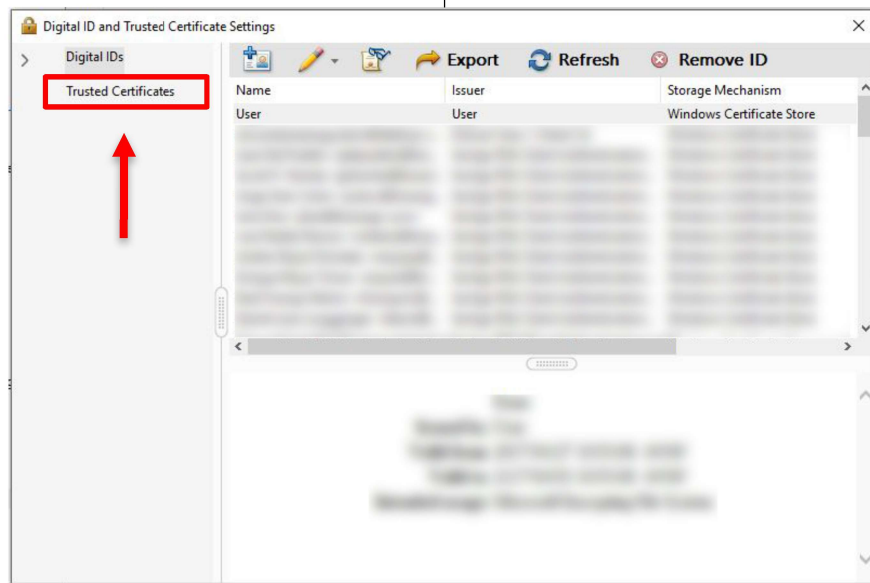


## Selezione Trusted Certificates

## Selezione Trusted Certificates

### Step 5

## Select Trusted Certificates

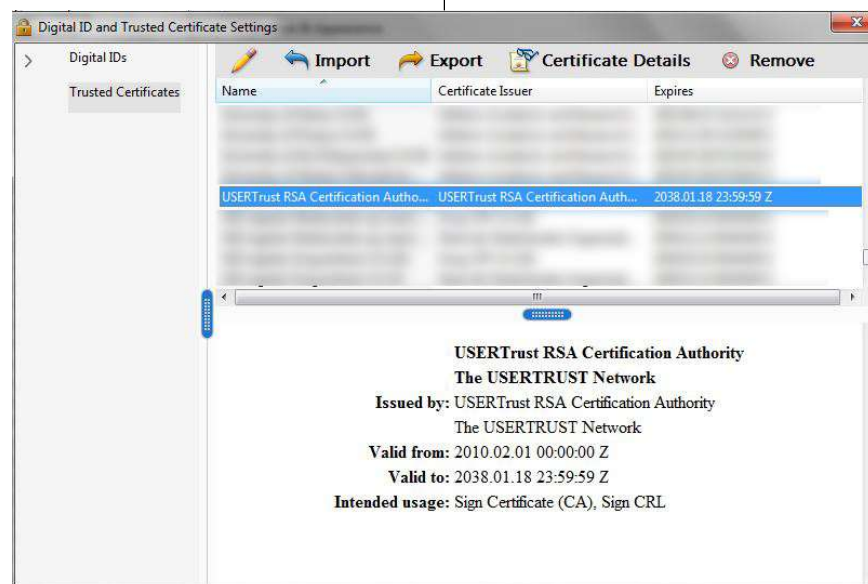


## Paso 6

Busque en el listado por un certificado llamado USERTrust RSA Certification Authority

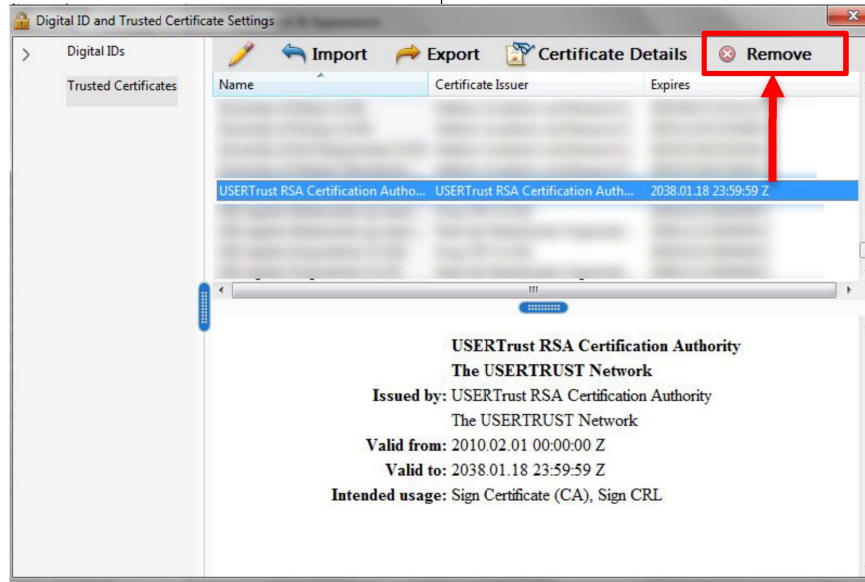
### Step 6

Look in the list for a certificate called  
*USERTrust RSA Certification Authority*



**Paso 7**  
Presione Remove

**Step 7**  
Press Remove



**Paso 8**  
Presione OK

**Step 8**  
Press OK



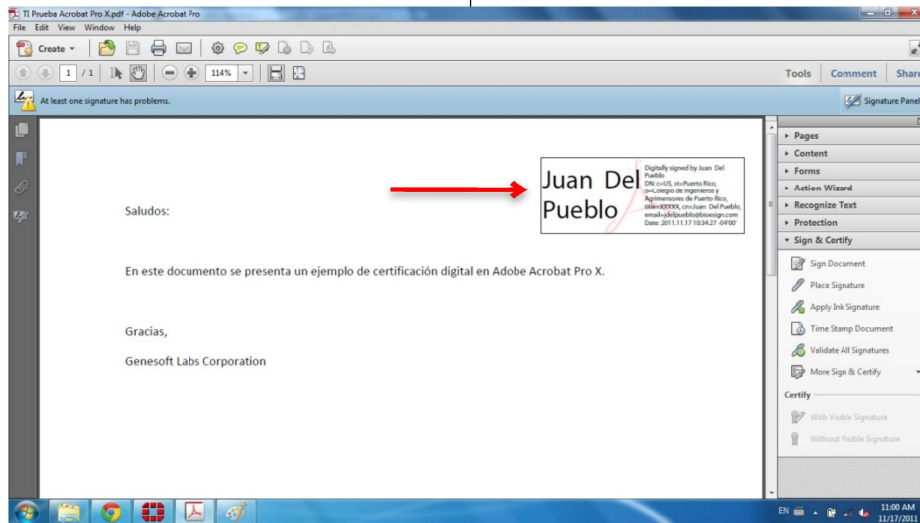
ATENCION	ATTENTION
El status de su firma digital cambiara de status a Valid, y habra culminado el proceso. Si cambia al status Unkown, favor de continuar con las siguientes instrucciones.	The status of your digital signature will change to Valid, and finished with the procedure. If it changes to status Unknown, please continue with the following instructions.

## Paso 9

Presione sobre su certificado digital en el documento.

## Step 9

Press over your digital signature on the document.



## Paso 10

Presione sobre Signature Properties...

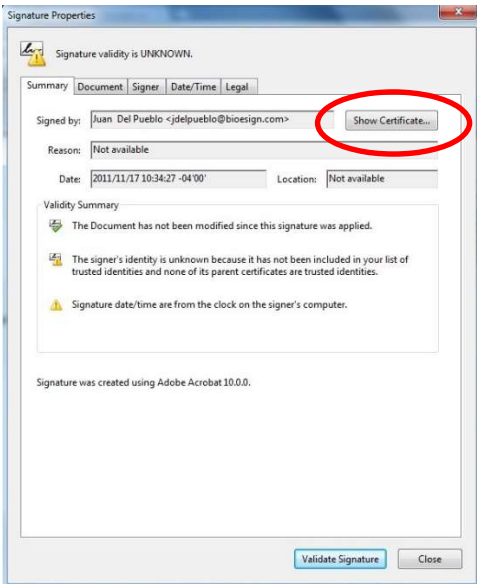
## Step 10

Press Signature Properties...



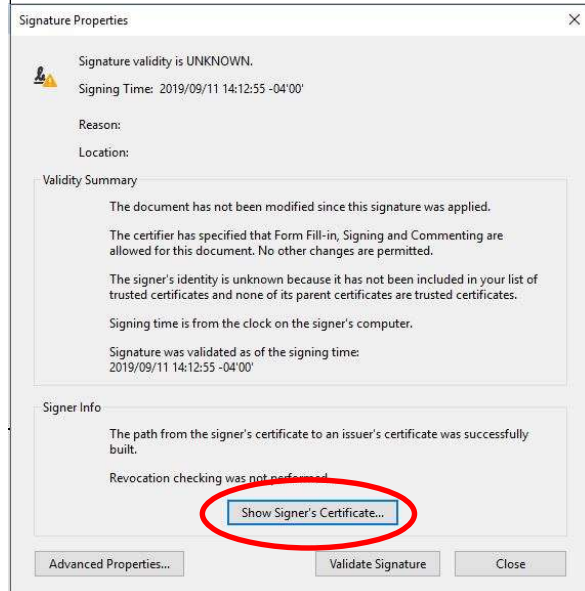
## Paso 11

Presione sobre Show Certificate... o Show Signer's Certificate...



## Step 11

Press Show Certificate or Show Signer's Certificate...

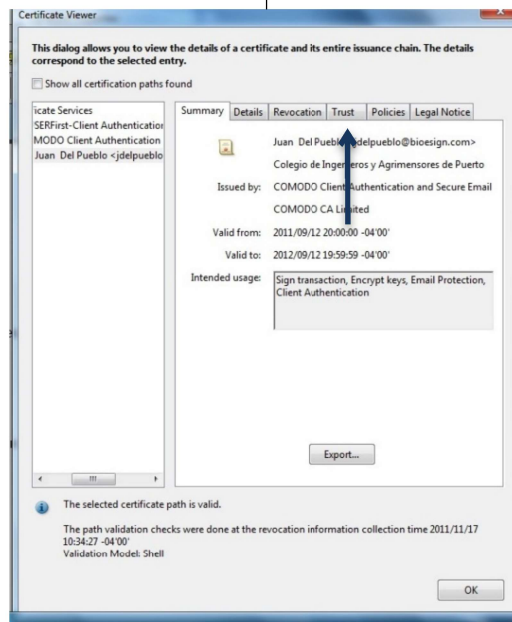


## Paso 12

Presione sobre el tab de Trust.

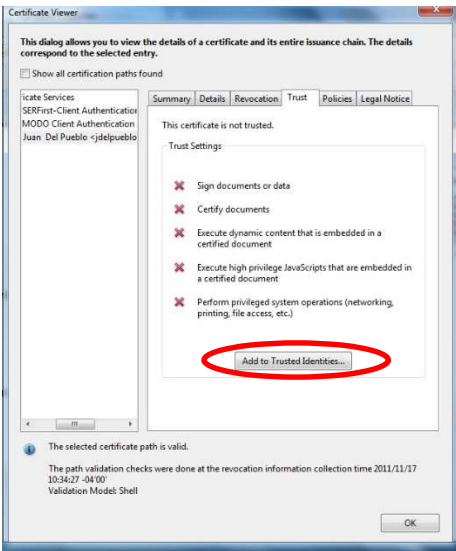
## Step 12

Press the Trust tab.



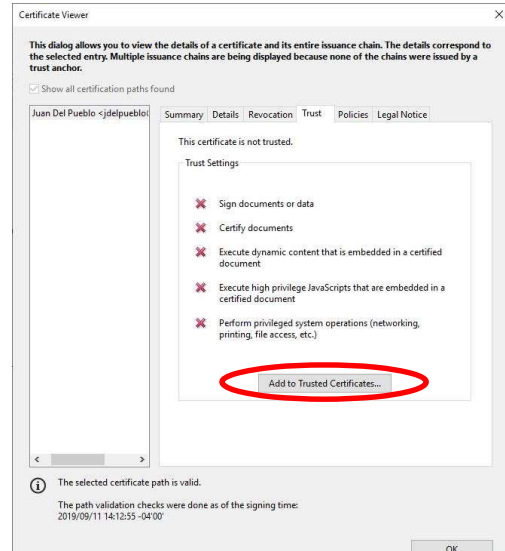
## Paso 13

Presione el botón de Add To Trusted Identities... o Add to Trusted Certificates...



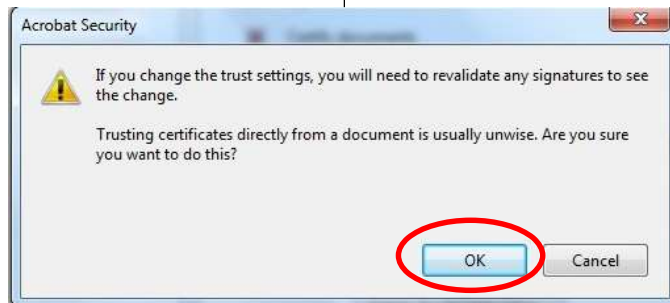
## Step 13

Press the Add To Trusted Identities... or Add to Trusted Certificates...



## Paso 14

Presione OK.



## Step 14

Press OK

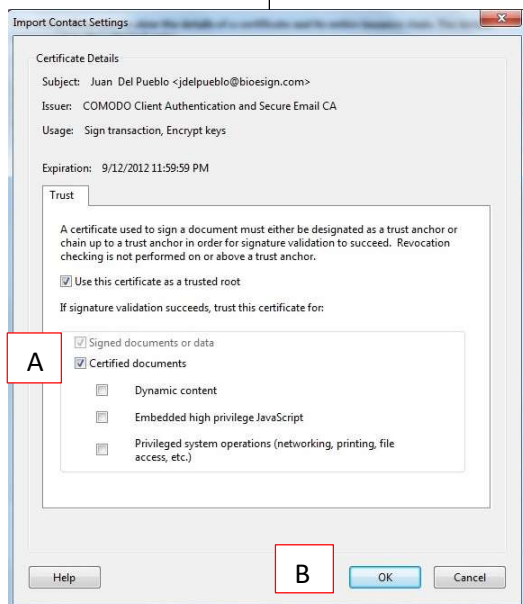


## Paso 15

Seleccione la opción de Certified documents (A). Si ya está seleccionada, presione OK (B).

## Step 15

Select Certified documents (A). If it is already selected, press OK (B).

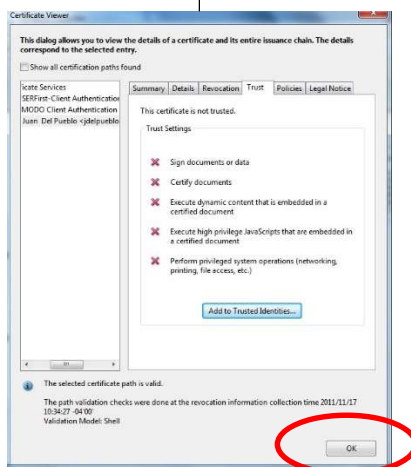


## Paso 16

Presione Ok.

## Step 16

Presione OK.

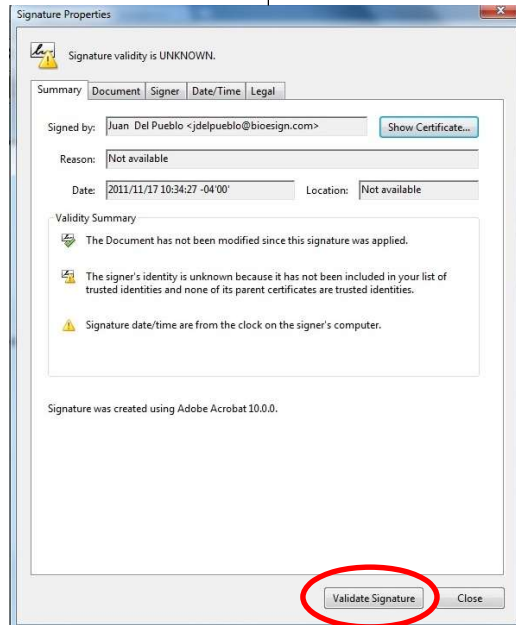


## Paso 17

Presione Validate Signature.

## Step 17

Press Validate Signature



FIN

DONE

